



LEFT ISOMETRIC ELEVATION

759 SQ.FT - 30'-0"X 29'-10"

		
2 BEDROOMS	2 BATHROOMS	759 SQFT

SQUARE FOOTAGE BREAKDOWN

TOTAL HEATED AREA:759 SQ. FT.
 1ST FLOOR:759 SQ. FT.
 PORCH, COMBINED:0 SQ. FT.
 PORCH, REAR:0 SQ. FT.
 PORCH, FRONT:0 SQ. FT.

BEDS/BATHS

BEDROOMS:2
 FULL BATHROOMS:2
 HALF BATHROOMS:0

FOUNDATION TYPE

STANDARD FOUNDATIONS:MONOLITHIC SLAB, SLAB
 OPTIONAL FOUNDATIONS:DAYLIGHT, CRAWL,
 BASEMENT
 NEED A DIFFERENT FOUNDATION?REQUEST A
 MODIFICATION QUOTE

EXTERIOR WALLS

STANDARD TYPE(S):2X6

DIMENSIONS

WIDTH:30'-0"
 DEPTH:29'-10"
 MAX RIDGE HEIGHT:14'-5"

GARAGE

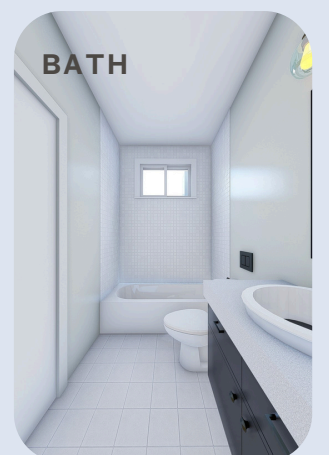
TYPE:NONE
 AREA:0 SQ. FT.
 COUNT:0 CARS
 ENTRY LOCATION:NONE

CEILING HEIGHTS

FIRST FLOOR: 9'-0" CEILING HEIGHT

ROOF DETAILS

PRIMARY PITCH:5 ON 12
 SECONDARY PITCH:NONE
 FRAMING TYPE:TRUSS



3D FLOOR PLAN



COMPACT DESIGN
Efficient Design, Exceptional Living



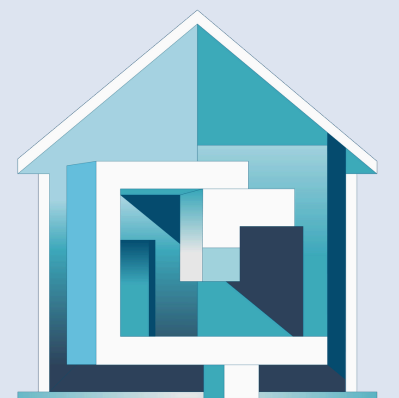
FRONT ELEVATION



REAR ELEVATION



RIGHT ISOMETRIC ELEVATION



COMPACT DESIGN
Efficient Design, Exceptional Living