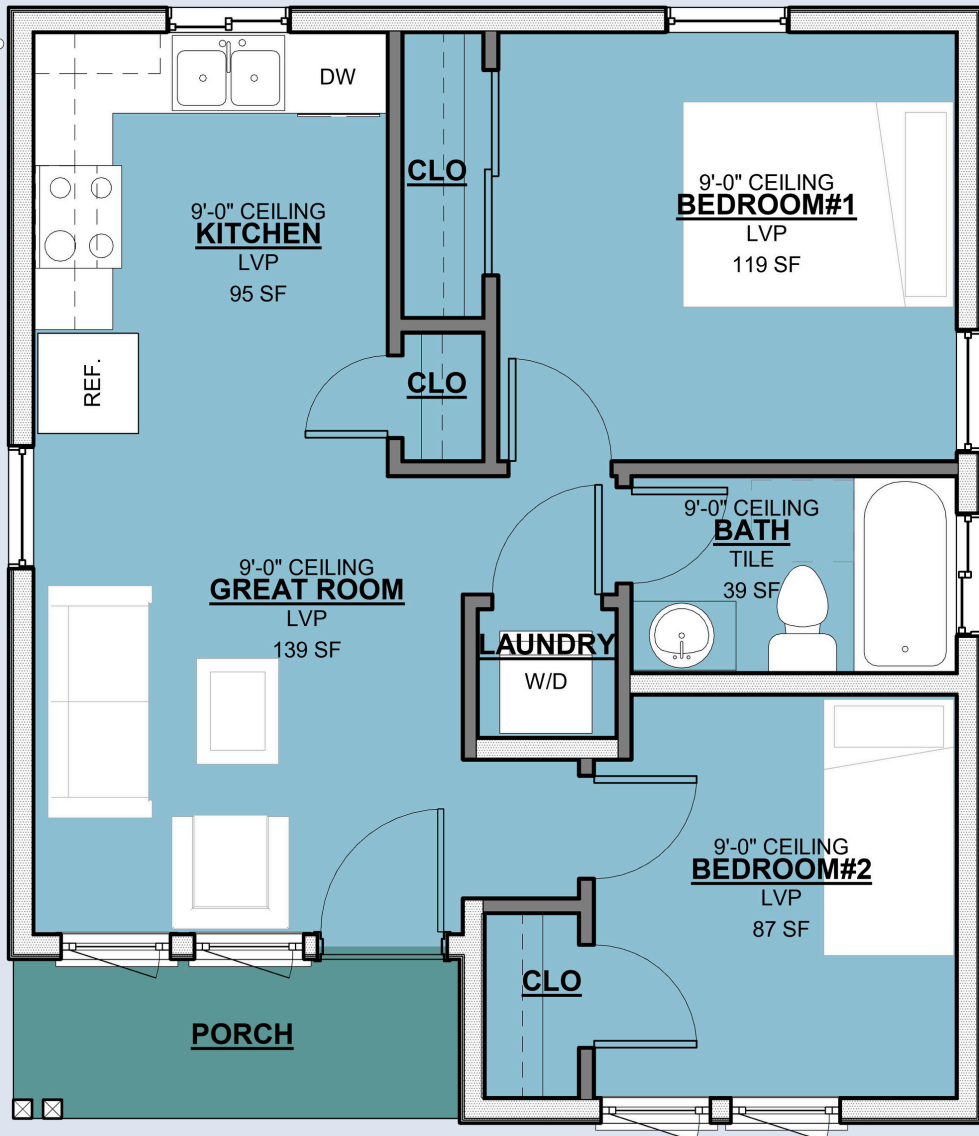




LEFT ISOMETRIC ELEVATION

591 SQ.FT - 23'-6" X 27'-0"

		
2 BEDROOMS	1 BATHROOMS	591 SQFT



SQUARE FOOTAGE BREAKDOWN

TOTAL HEATED AREA: 591 SQ. FT.
 1ST FLOOR: 591 SQ. FT.
 PORCH, COMBINED: 44 SQ. FT.
 PORCH, REAR: 0 SQ. FT.
 PORCH, FRONT: 44 SQ. FT.

BEDS/BATHS

BEDROOMS: 2
 FULL BATHROOMS: 1
 HALF BATHROOMS: 0

FOUNDATION TYPE

STANDARD FOUNDATIONS: MONOLITHIC SLAB, SLAB
 OPTIONAL FOUNDATIONS: DAYLIGHT, CRAWL,
 BASEMENT
 NEED A DIFFERENT FOUNDATION? REQUEST A
 MODIFICATION QUOTE

EXTERIOR WALLS

STANDARD TYPE(S): 2X6

DIMENSIONS

WIDTH: 23'-6"
 DEPTH: 27'-0"
 MAX RIDGE HEIGHT: 15'-10"

GARAGE

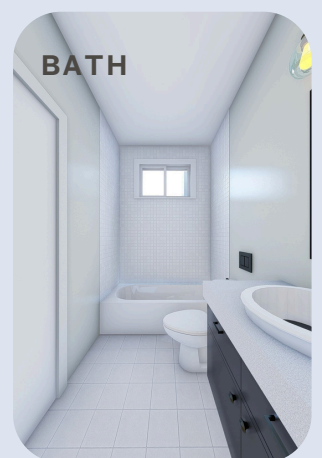
TYPE: NONE
 AREA: 0 SQ. FT.
 COUNT: 0 CARS
 ENTRY LOCATION: NONE

CEILING HEIGHTS

FIRST FLOOR: 9'-0" CEILING HEIGHT

ROOF DETAILS

PRIMARY PITCH: 6 ON 12
 SECONDARY PITCH: 6 ON 12
 FRAMING TYPE: TRUSS



3D FLOOR PLAN



COMPACT DESIGN
Efficient Design, Exceptional Living



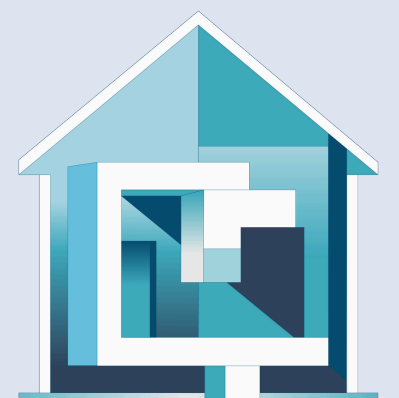
FRONT ELEVATION



REAR ELEVATION



RIGHT ISOMETRIC ELEVATION



COMPACT DESIGN
Efficient Design, Exceptional Living