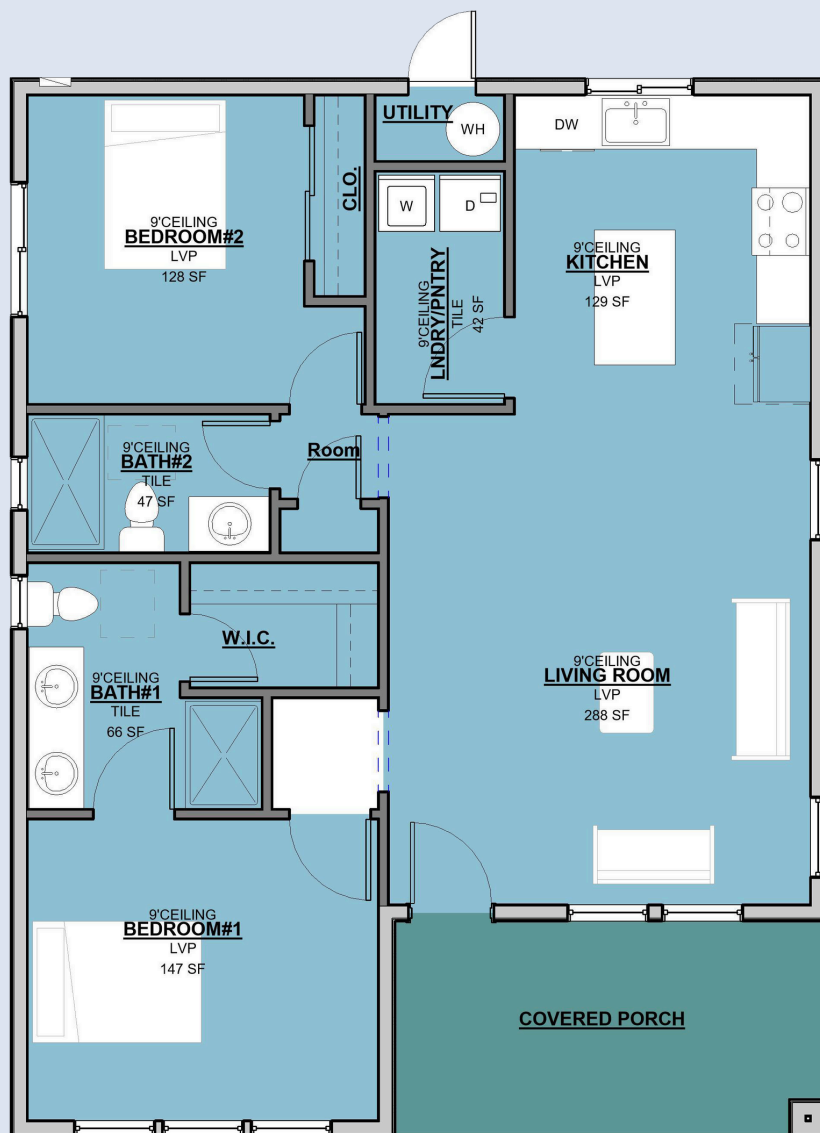




LEFT ISOMETRIC ELEVATION

1042 SQ.FT - 30'-0"X 39'-0"

		
2 BEDROOM	2 BATHROOM	1042 SQFT



**SQUARE FOOTAGE BREAKDOWN**  
 TOTAL HEATED AREA:1042 SQ. FT.  
 1ST FLOOR: 1042 SQ. FT.  
 PORCH, COMBINED: 128 SQ. FT.  
 UTILITY:NONE

**BEDS/BATHS**  
 BEDROOM:2  
 FULL BATHROOMS:2  
 HALF BATHROOMS:0

**FOUNDATION TYPE**  
 STANDARD FOUNDATIONS:MONOLITHIC SLAB, SLAB  
 OPTIONAL FOUNDATIONS:DAYLIGHT, CRAWL, BASEMENT  
 NEED A DIFFERENT FOUNDATION?REQUEST A  
 MODIFICATION QUOTE

**EXTERIOR WALLS**  
 STANDARD TYPE(S):2X6  
**DIMENSIONS**  
 WIDTH:30'-0"  
 DEPTH:39'-0"  
 MAX RIDGE HEIGHT:17'-6"

**GARAGE**  
 TYPE:NONE  
 AREA:0 SQ. FT.  
 COUNT:0 CARS  
 ENTRY LOCATION:NONE

**CEILING HEIGHTS**  
 FIRST FLOOR: 9'-0" CEILING HEIGHT  
 GREAT ROOM VAULTED 0'-0"

**ROOF DETAILS**  
 PRIMARY PITCH:5 ON 12  
 SECONDARY PITCH:5 ON 12  
 FRAMING TYPE:TRUSS



M. BEDROOM



LIVING



BATH



KITCHEN

# 3D FLOOR PLAN



**COMPACT DESIGN**  
Efficient Design, Exceptional Living



**FRONT ELEVATION**



**REAR ELEVATION**



**RIGHT ISOMETRIC ELEVATION**



**COMPACT DESIGN**  
Efficient Design, Exceptional Living