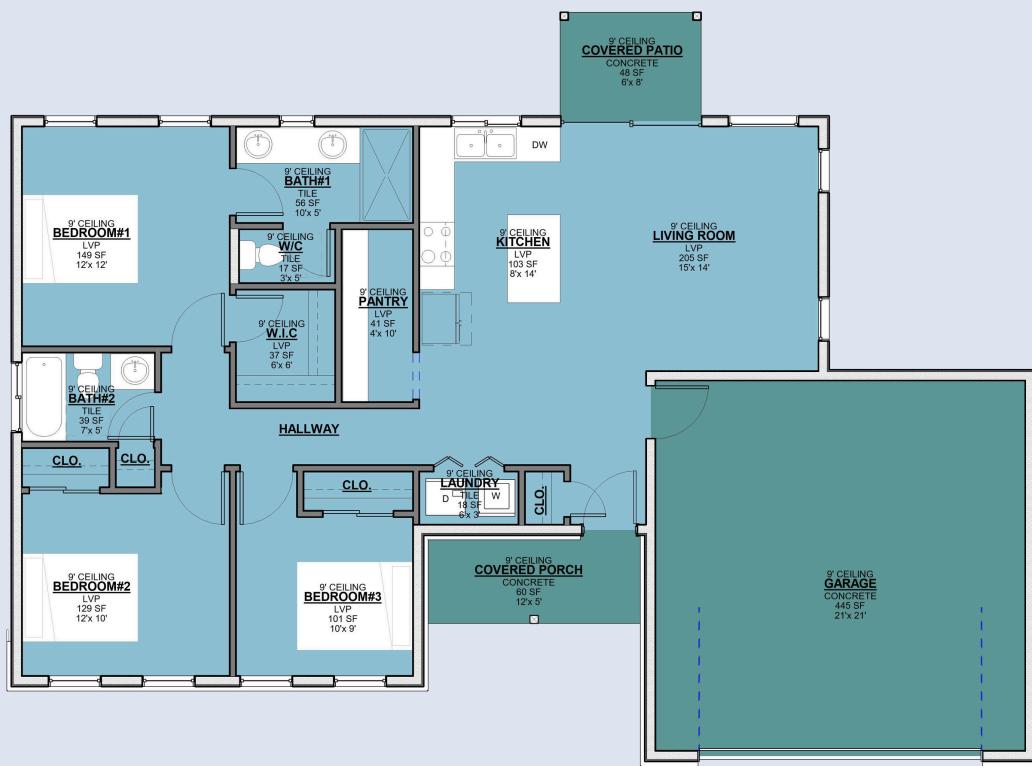




LEFT ISOMETRIC ELEVATION

1200 SQ.FT - 58'-0" X 36'-5"

		
3 BEDROOM	2 BATHROOM	1200SQFT



SQUARE FOOTAGE BREAKDOWN

TOTAL HEATED AREA:1200 SQ. FT.
 1ST FLOOR: 1200 SQ. FT
 COVERED PORCH :65 SQ.FT.
 COVERED PATIO :48 SQ.FT.

BEDS/BATHS

BEDROOM:3
 FULL BATHROOMS:2

FOUNDATION TYPE

STANDARD FOUNDATIONS:MONOLITHIC SLAB, SLAB
 OPTIONAL FOUNDATIONS:DAYLIGHT, CRAWL, BASEMENT
 NEED A DIFFERENT FOUNDATION?REQUEST A
 MODIFICATION QUOTE

EXTERIOR WALLS

STANDARD TYPE(S):2X6

DIMENSIONS

WIDTH:58'-0"
 DEPTH:36'-5"
 MAX RIDGE HEIGHT:19'-7"

GARAGE

TYPE:CONCRETE
 AREA:445 SQ. FT.
 COUNT:2 CARS

CEILING HEIGHTS

FIRST FLOOR: 9'-0" CEILING HEIGHT
 GREAT ROOM VAULTED 0'-0"

ROOF DETAILS

PRIMARY PITCH: 5 ON 12
 SECONDRY PITCH: 5 ON 12
 FRAMING TYPE:TRUSS



M. BEDROOM



LIVING



BATH



KITCHEN

3D FLOOR PLAN



COMPACT DESIGN
Efficient Design, Exceptional Living



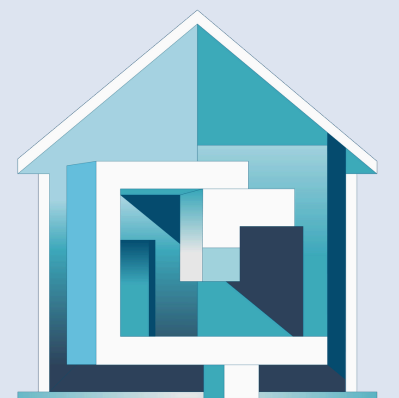
FRONT ELEVATION



REAR ELEVATION



RIGHT ISOMETRIC ELEVATION



COMPACT DESIGN
Efficient Design, Exceptional Living